

# Sim & Sea

*The Simulation and the Sea*

www.mimos.it

 **MIMOS** movimento italiano  
modellizzazione e simulazione



*MIMOS Workshop on Simulation Tools and  
Techniques applied within  
Marine Domain*

*Galata, Sea Museum, Genoa, Italy, June 9 2014*



Fondazione FINCANTIERI

# Sim & Sea

*The Simulation and the Sea*

www.mimos.it

 **MIMOS** movimento italiano  
modellizzazione e simulazione



*MIMOS Workshop on Simulation Tools and  
Techniques applied within  
Marine Domain*

*Galata, Sea Museum, Genoa, Italy, June 9 2014*



# WELCOME



Fondazione FINCANTIERI

# Sim & Sea

The Simulation and the Sea



MIMOS Workshop on Simulation Tools and  
Techniques applied within  
Marine Domain

Galata, Sea Museum, Genoa, Italy, June 9 2014

NOV. 2014

## Sim & Sea 2014



GENOVA DATA 9 GIUGNO 2014

1/95

**ODERO - TERNI - ORLANDO**  
CANTIERI DI MUGLIANO - LA SPEZIA

SOMMERGIBILI TIPO PERLA  
COSTR. N. 234-243

VOLUMI DEI COMPARTIMENTI INTERNI, DOFF  
E CASSE INTERNE ED ESTERNE - PRESSIONI DI PROVA

SCALA 1:200

ESL.	LAD.	VER.	CONTR.

DISEGNO N. 58431 - DATA 7 LUGLIO 2006

DESCRIZIONE	VALORE
CANALIZZAZIONE LUNGHERIA	44,00
CANALIZZAZIONE LUNGHERIA	6,000
LUNGHERIA LUNGHERIA	48,000
AUXILIARIA LUNGHERIA	3,000

LUNGHERIA	VALORE
LUNGHERIA SUOLA INTERA	60,000
" " PER LA PZ	60,000
AL GALLEGGIAMENTO	
LARGHEZZA MASSIMA AT	6,000
ALTEZZA DI CENTRO (CONTR. DI PROVA)	
IMMERSIONE NERA SULLA L.C.	
" " DAL SOTTOCOSTELLA	
INCLINAZIONE ALLA SUPERFICIE D'ACQUA	
" " IN IMMERSIONE	

LOCALI INTERNI				
NUM. IDENTIF.	DESCRIZIONE	CAPACITA' (M3)	RESIST. (MPa)	ACCIAIO (M3)
A	23100 LOCALI LAVORO AT	84,38	45,48	40
B	23100 SANITAZIONE AT	2,34	9,51	40
C	23100 ALLOGGI MESSA AT	40,86	32,70	40
D	23100 LOCALI ACCOGLIAMENTO AT	22,55	18,36	40
E	23100 LOCALI ACCOGLIAMENTO AT	11,32	9,13	40
F	23100 LOCALI ACCOGLIAMENTO AT	11,32	9,13	40
G	23100 LOCALI ACCOGLIAMENTO AT	11,32	9,13	40
H	23100 LOCALI ACCOGLIAMENTO AT	11,32	9,13	40
I	23100 LOCALI ACCOGLIAMENTO AT	11,32	9,13	40
L	23100 LOCALI ACCOGLIAMENTO AT	11,32	9,13	40
M	23100 LOCALI ACCOGLIAMENTO AT	11,32	9,13	40
N	23100 LOCALI ACCOGLIAMENTO AT	11,32	9,13	40
O	23100 LOCALI ACCOGLIAMENTO AT	11,32	9,13	40

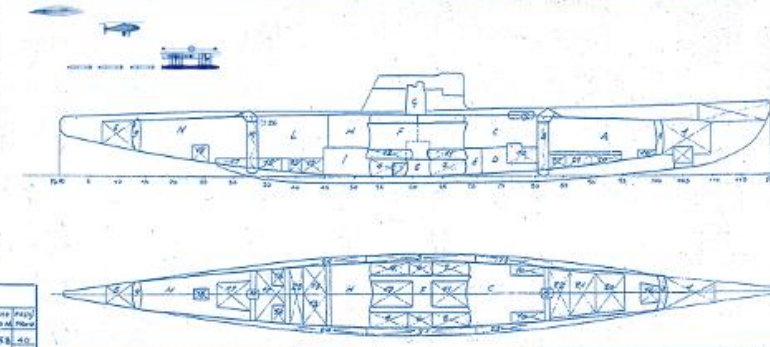
  

CASSA DI BANDIERA D'ACQUA, ACCIAIO E COPERTURE				
NUM. IDENTIF.	DESCRIZIONE	CAPACITA' (M3)	RESIST. (MPa)	ACCIAIO (M3)
1	10100 CASSA BANDIERA AT	19,24	9,13	40
2	10100 CASSA BANDIERA AT	19,24	9,13	40
3	10100 CASSA BANDIERA AT	19,24	9,13	40
4	10100 CASSA BANDIERA AT	19,24	9,13	40
5	10100 CASSA BANDIERA AT	19,24	9,13	40
6	10100 CASSA BANDIERA AT	19,24	9,13	40
7	10100 CASSA BANDIERA AT	19,24	9,13	40
8	10100 CASSA BANDIERA AT	19,24	9,13	40
9	10100 CASSA BANDIERA AT	19,24	9,13	40
10	10100 CASSA BANDIERA AT	19,24	9,13	40
11	10100 CASSA BANDIERA AT	19,24	9,13	40
12	10100 CASSA BANDIERA AT	19,24	9,13	40
13	10100 CASSA BANDIERA AT	19,24	9,13	40
14	10100 CASSA BANDIERA AT	19,24	9,13	40
15	10100 CASSA BANDIERA AT	19,24	9,13	40

CASSA DUE ACQUA DOLCE E NAUTA				
NUM. IDENTIF.	DESCRIZIONE	CAPACITA' (M3)	RESIST. (MPa)	ACCIAIO (M3)
16	10100 CASSA DUE ACQUA DOLCE E NAUTA	19,24	9,13	40
17	10100 CASSA DUE ACQUA DOLCE E NAUTA	19,24	9,13	40
18	10100 CASSA DUE ACQUA DOLCE E NAUTA	19,24	9,13	40
19	10100 CASSA DUE ACQUA DOLCE E NAUTA	19,24	9,13	40
20	10100 CASSA DUE ACQUA DOLCE E NAUTA	19,24	9,13	40
21	10100 CASSA DUE ACQUA DOLCE E NAUTA	19,24	9,13	40
22	10100 CASSA DUE ACQUA DOLCE E NAUTA	19,24	9,13	40
23	10100 CASSA DUE ACQUA DOLCE E NAUTA	19,24	9,13	40
24	10100 CASSA DUE ACQUA DOLCE E NAUTA	19,24	9,13	40
25	10100 CASSA DUE ACQUA DOLCE E NAUTA	19,24	9,13	40

LE CASSE SONO IN BIANCO  
NELLA REALTA' DEL LIVELLO DI  
TAVOLA NELLA VANTO CASSA






MIMOS Workshop on Simulation Tools and  
Techniques applied within  
Marine Domain

Galata, Sea Museum, Genoa, Italy, June 9 2014

## Sim & Sea General Chairs

*Prof. Agostino Bruzzone*

Simulation Team, University of Genoa



*Ing. Francesco Lupi*

Brain & Knowledge



*Ing. Aldo Zini*

Cetena, Fincantieri Group



FABARIS



Fondazione Fincantieri

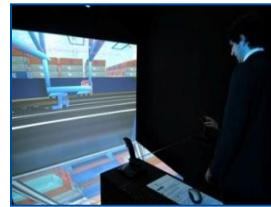


MIMOS Workshop on Simulation Tools and  
Techniques applied within  
Marine Domain

Galata, Sea Museum, Genoa, Italy, June 9 2014

## Sim & Sea

The Sea is a challenging world where often we have to operate at the limit of human capability. The complexity of this environment is balanced by the richness of its opportunities and we have to address a broad area of expertise as well as multiple sectors and topics to succeed over there; so, in this context, the modern methods of Modelling & Simulation (M&S) represent a strategic science; therefore simulation is the essential investigation tool able to extend our capabilities to study and analyze multidisciplinary problems within virtual interoperable worlds and to experiment new concepts and new strategies. Hence, the Workshop "Simulation and the Sea" focuses on how to operate effectively and efficiently in the context of port & logistics, maritime navigation & shipping, oil & gas activities, defense and homeland security.





*MIMOS Workshop on Simulation Tools and  
Techniques applied within  
Marine Domain*

*Galata, Sea Museum, Genoa, Italy, June 9 2014*

**Avv.D'Aste**  
General Secretary  
Genoa Port Authority



GALATA  
MUSEO DEL MARE



Fondazione FINCANTIERI



MIMOS Workshop on Simulation Tools and Techniques applied within Marine Domain

Galata, Sea Museum, Genoa, Italy, June 9 2014

ADM Morellato  
CSSN Director  
Marina Militare Italiana

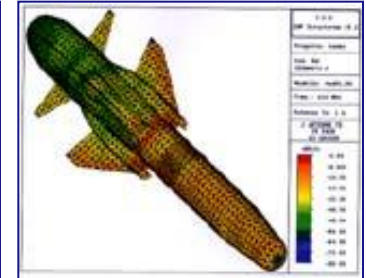
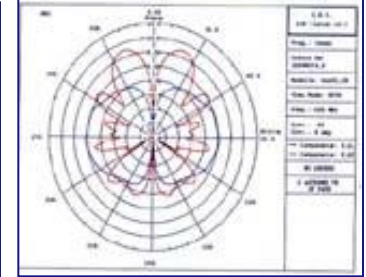


Figura 7.3 - Distribuzione di corrente analisi 018



# Sim & Sea

*The Simulation and the Sea*

www.mimos.it

 **MIMOS** movimento italiano  
modellizzazione e simulazione



*MIMOS Workshop on Simulation Tools and  
Techniques applied within  
Marine Domain*

*Galata, Sea Museum, Genoa, Italy, June 9 2014*

**Prof. Massardo**  
Polytechnic School Dean  
University of Genoa



Fondazione FINCANTIERI



# Sim & Sea

The Simulation and the Sea

www.mimos.it

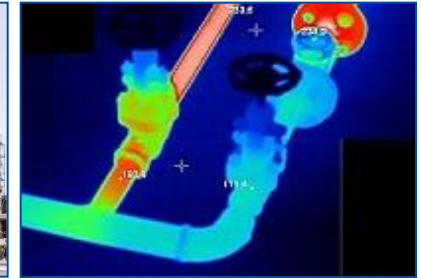
 **MIMOS** movimento italiano  
modellizzazione e simulazione



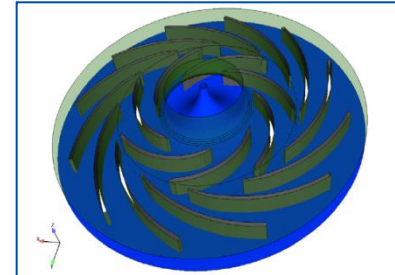
MIMOS Workshop on Simulation Tools and  
Techniques applied within  
Marine Domain

Galata, Sea Museum, Genoa, Italy, June 9 2014

**Prof. Zunino**  
DIME Director  
University of Genoa



DIME



Fondazione FINCANTIERI



MIMOS Workshop on Simulation Tools and  
Techniques applied within  
Marine Domain

Galata, Sea Museum, Genoa, Italy, June 9 2014

## CAPT Massucco

Business Development  
NATO STO CMRE



# Sim & Sea

The Simulation and the Sea

www.mimos.it

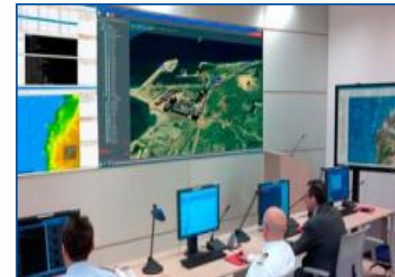
 **MIMOS** movimento italiano  
modellizzazione e simulazione



MIMOS Workshop on Simulation Tools and  
Techniques applied within  
Marine Domain

Galata, Sea Museum, Genoa, Italy, June 9 2014

**CAPT Milano**  
M&S COE Vice Director  
& NMSG Italian Representative



Fondazione Fincantieri

# Sim & Sea

The Simulation and the Sea

www.mimos.it

 **MIMOS** movimento italiano  
modellizzazione e simulazione



*MIMOS Workshop on Simulation Tools and  
Techniques applied within  
Marine Domain*

*Galata, Sea Museum, Genoa, Italy, June 9 2014*

**Ing. Proietti**  
MIMOS Vice Director  
& Finmeccanica



Fondazione FINCANTIERI

# Sim & Sea

*The Simulation and the Sea*

www.mimos.it

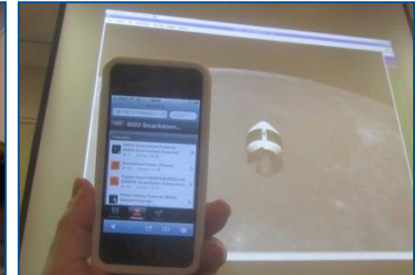
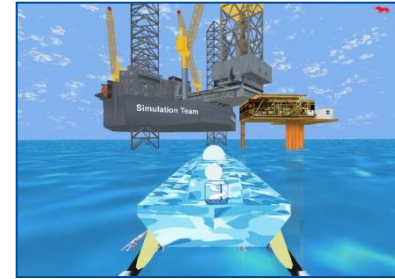
 **MIMOS** movimento italiano  
modellizzazione e simulazione



*MIMOS Workshop on Simulation Tools and  
Techniques applied within  
Marine Domain*

*Galata, Sea Museum, Genoa, Italy, June 9 2014*

***Dott.ssa.Massei***  
Liophant Simulation Treasurer &  
Genoa University



Fondazione Fincantieri

# Sim & Sea

The Simulation and the Sea

www.mimos.it

 **MIMOS** movimento italiano  
modellizzazione e simulazione



*MIMOS Workshop on Simulation Tools and  
Techniques applied within  
Marine Domain*

*Galata, Sea Museum, Genoa, Italy, June 9 2014*

**Dott.ssa. Profumo**  
President Galata  
Museo del Mare



Fondazione Fincantieri

# Sim & Sea

The Simulation and the Sea

www.mimos.it

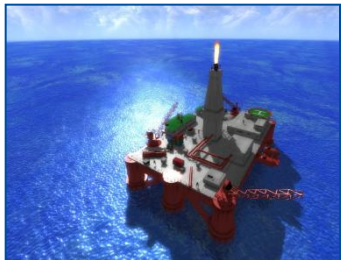
 **MIMOS** movimento italiano  
modellizzazione e simulazione



MIMOS Workshop on Simulation Tools and  
Techniques applied within  
Marine Domain

Galata, Sea Museum, Genoa, Italy, June 9 2014

## Sim & Sea Sponsor :



Fondazione **FINCANTIERI**



Fondazione **FINCANTIERI**



MIMOS Workshop on Simulation Tools and  
Techniques applied within  
Marine Domain

Galata, Sea Museum, Genoa, Italy, June 9 2014

**12:00 – 13:00 Lunch break**

Agreements: with Bars for **Sim & Sea Badge holders**:

- **La Banchina:** <http://www.labanchina.it/>  
(first course + drink 10 €)  
(first course + drink + coffee 11 €)
- **Old Port Bar:** <http://www.oldport.it/>  
(bill -2 €)





# Sim & Sea

The Simulation and the Sea

www.mimos.it

 **MIMOS** movimento italiano  
modellizzazione e simulazione



*MIMOS Workshop on Simulation Tools and  
Techniques applied within  
Marine Domain*

*Galata, Sea Museum, Genoa, Italy, June 9 2014*



Lets

Start



Fondazione FINCANTIERI